

Seasonal human coronavirus antibodies are boosted upon SARS-CoV-2 infection but not associated with protection

Elizabeth M. Anderson, Eileen C. Goodwin, Anurag Verma, Claudia P. Arevalo, Marcus J. Bolton, Madison E. Weirick, Sigrid Gouma, Christopher M. McAllister, Shannon R. Christensen, JoEllen Weaver, Philip Hicks, Tomaz B. Manzoni, Oluwatosin Oniyide, Holly Ramage, Divij Mathew, Amy E. Baxter, Derek A. Oldridge, Allison R. Greenplate, Jennifer E. Wu, Cécile Alanio, Kurt D'Andrea, Oliva Kuthuru, Jeanette Dougherty, Ajinkya Pattekar, Justin Kim, Nicholas Han, Sokratis A. Apostolidis, Alex C. Huang, Laura A. Vella, Leticia Kuri-Cervantes, M. Betina Pampena, The UPenn COVID Processing Unit, Michael R. Betts, E. John Wherry, Nuala J. Meyer, Sara Cherry, Paul Bates, Daniel J. Rader, Scott E. Hensley

PII: S0092-8674(21)00160-4

DOI: <https://doi.org/10.1016/j.cell.2021.02.010>

Reference: CELL 11873

To appear in: *Cell*

Received Date: 18 November 2020

Revised Date: 11 January 2021

Accepted Date: 1 February 2021

Please cite this article as: Anderson, E.M., Goodwin, E.C., Verma, A., Arevalo, C.P., Bolton, M.J., Weirick, M.E., Gouma, S., McAllister, C.M., Christensen, S.R., Weaver, J., Hicks, P., Manzoni, T.B., Oniyide, O., Ramage, H., Mathew, D., Baxter, A.E., Oldridge, D.A., Greenplate, A.R., Wu, J.E., Alanio, C., D'Andrea, K., Kuthuru, O., Dougherty, J., Pattekar, A., Kim, J., Han, N., Apostolidis, S.A., Huang, A.C., Vella, L.A., Kuri-Cervantes, L., Pampena, M.B., The UPenn COVID Processing Unit, Betts, M.R., Wherry, E.J., Meyer, N.J., Cherry, S., Bates, P., Rader, D.J., Hensley, S.E., Seasonal human coronavirus antibodies are boosted upon SARS-CoV-2 infection but not associated with protection, *Cell* (2021), doi: <https://doi.org/10.1016/j.cell.2021.02.010>.

This is a PDF file of an article that has undergone enhancements after acceptance, such as the addition of a cover page and metadata, and formatting for readability, but it is not yet the definitive version of record. This version will undergo additional copyediting, typesetting and review before it is published

in its final form, but we are providing this version to give early visibility of the article. Please note that, during the production process, errors may be discovered which could affect the content, and all legal disclaimers that apply to the journal pertain.

© 2021 Elsevier Inc.

Pre-Pandemic

■ Individuals with cross-reactive antibodies

■ Individuals without cross-reactive antibodies



SARS-CoV-2 Susceptibility

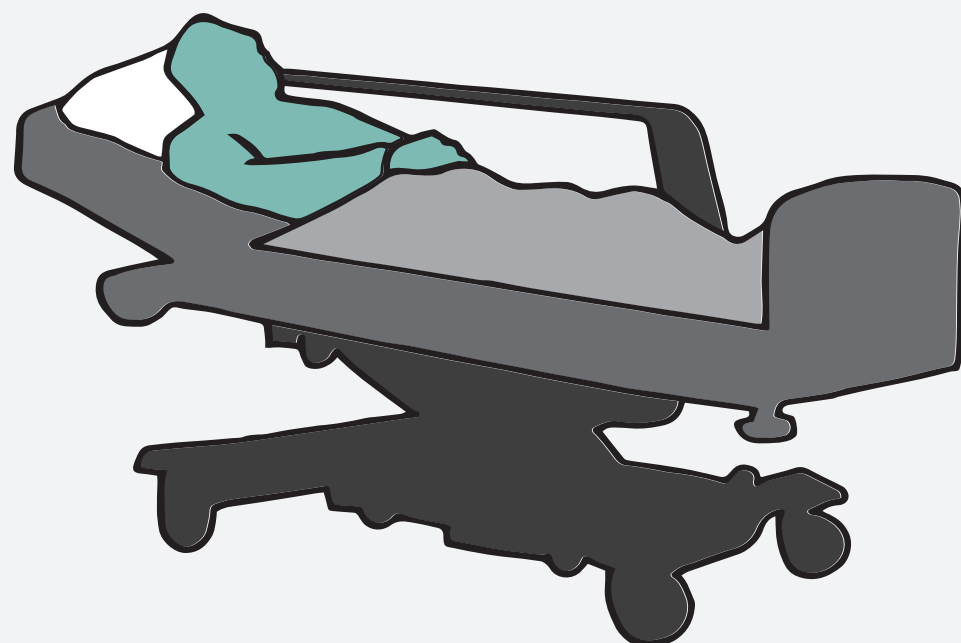
Infected



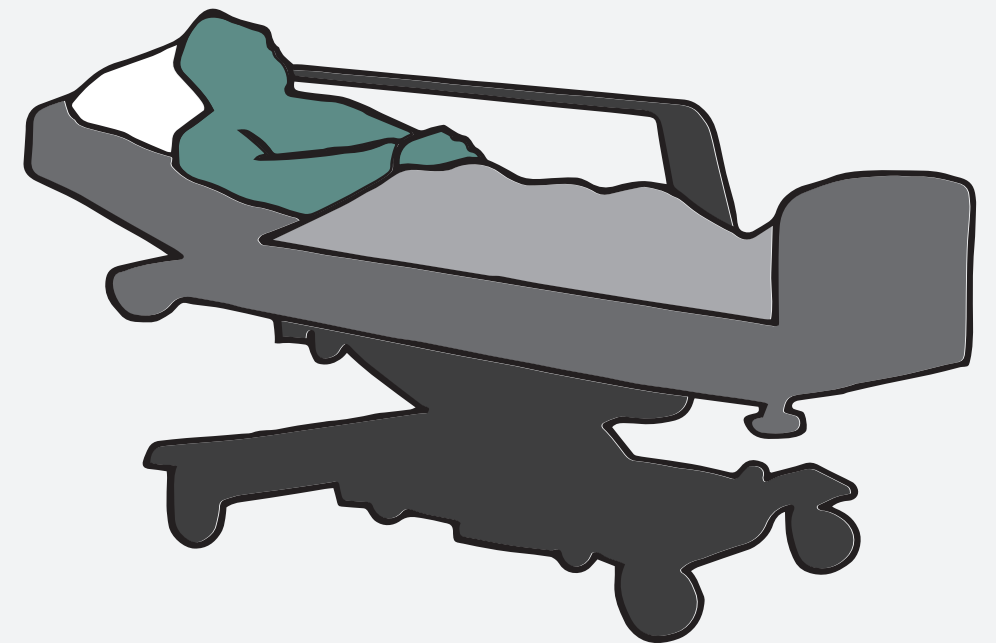
Not Infected



Following SARS-CoV-2 Infection



Boost of cross-reactive antibodies



Seasonal human coronavirus antibodies are boosted upon SARS-CoV-2 infection but not associated with protection

Elizabeth M. Anderson^{1,13}, Eileen C. Goodwin^{1,13}, Anurag Verma^{2,13}, Claudia P. Arevalo¹, Marcus J. Bolton¹, Madison E. Weirick¹, Sigrid Gouma¹, Christopher M. McAllister¹, Shannon R. Christensen¹, JoEllen Weaver², Philip Hicks³, Tomaz B. Manzoni¹, Oluwatosin Oniyide⁴, Holly Ramage^{5,12}, Divij Mathew^{6,7}, Amy E. Baxter^{6,7}, Derek A. Oldridge^{6,7}, Allison R. Greenplate^{6,7}, Jennifer E. Wu^{6,7,8}, Cécile Alanio^{6,7,8}, Kurt D'Andrea^{6,7}, Oliva Kuthuru^{6,7}, Jeanette Dougherty^{6,7}, Ajinkya Pattekar^{6,7}, Justin Kim^{6,7}, Nicholas Han^{6,7}, Sokratis A. Apostolidis^{6,7}, Alex C. Huang^{6,7}, Laura A. Vella^{6,7,9}, Leticia Kuri-Cervantes¹, M. Betina Pampena¹, The UPenn COVID Processing Unit¹⁰, Michael R. Betts¹, E. John Wherry^{6,7,8}, Nuala J. Meyer⁴, Sara Cherry⁵, Paul Bates^{1,11}, Daniel J. Rader², Scott E. Hensley^{1,14*}

¹Department of Microbiology, Perelman School of Medicine, University of Pennsylvania, Philadelphia, PA 19104, USA

²Department of Genetics, Perelman School of Medicine, University of Pennsylvania, Philadelphia, PA 19104, USA

³School of Veterinary Medicine, University of Pennsylvania, Philadelphia, PA 19104, USA

⁴Division of Pulmonary, Allergy, and Critical Care Medicine and Center for Translational Lung Biology, University of Pennsylvania Perelman School of Medicine, Philadelphia PA 19104, USA

⁵Department of Pathology and Laboratory Medicine, University of Pennsylvania, Philadelphia, PA, USA

⁶Institute for Immunology, Perelman School of Medicine, University of Pennsylvania, Philadelphia, PA 19104, USA

⁷Department of Systems Pharmacology and Translational Therapeutics, University of Pennsylvania, Philadelphia, PA 19104, USA

⁸Parker Institute for Cancer Immunotherapy, Perelman School of Medicine, University of Pennsylvania, Philadelphia, PA 19104, USA

⁹Division of Infectious Diseases, Department of Pediatrics, Children's Hospital of Philadelphia, Philadelphia, PA 19104, USA

¹⁰The UPenn COVID Processing Unit is a composed of individuals at the University of Pennsylvania who volunteered time and effort to enable the study of COVID-19 patients during the pandemic. Members are listed in the acknowledgement section of this paper.

¹¹Penn Center for Research on Coronavirus and Other Emerging Pathogens, University of Pennsylvania, Philadelphia, PA 19104, USA

¹²Current affiliation: Department of Microbiology and Immunology, Thomas Jefferson University, Philadelphia, PA 19104, USA

¹³These authors contributed equally

¹⁴Lead Contact

*Correspondence: hensley@pennmedicine.upenn.edu

SUMMARY

Severe acute respiratory syndrome coronavirus 2 (SARS-CoV-2) has rapidly spread within the human population. Although SARS-CoV-2 is a novel coronavirus, most humans had been previously exposed to other antigenically distinct common seasonal human coronaviruses (hCoVs) before the COVID-19 pandemic. Here, we quantified levels of SARS-CoV-2-reactive antibodies and hCoV-reactive antibodies in serum samples collected from 431 humans before the COVID-19 pandemic. We then quantified pre-pandemic antibody levels in serum from a separate cohort of 251 individuals who became PCR-confirmed infected with SARS-CoV-2. Finally, we longitudinally measured hCoV and SARS-CoV-2 antibodies in the serum of hospitalized COVID-19 patients. Our studies indicate that most individuals possessed hCoV-reactive antibodies before the COVID-19 pandemic. We determined that ~20% of these individuals possessed non-neutralizing antibodies that cross-reacted with SARS-CoV-2 spike and nucleocapsid proteins. These antibodies were not associated with protection against SARS-CoV-2 infections or hospitalizations, but they were boosted upon SARS-CoV-2 infection.

INTRODUCTION

Coronaviruses commonly infect humans(Dijkman et al., 2012, Friedman et al., 2018, Gaunt et al., 2010, Killerby et al., 2018). The severe acute respiratory syndrome coronavirus 2 (SARS-CoV-2) emerged at the end of 2019 and has rapidly spread among humans, many of whom have been previously exposed to common seasonal human coronaviruses (hCoVs) (Edridge et al., 2020). Common seasonal hCoVs include the betacoronaviruses HKU1 and OC43 and the alphacoronaviruses 229E and NL63(Pfefferle et al., 2009, Pyrc et al., 2006, Vijgen et al., 2006, Woo et al., 2005). SARS-CoV-2 belongs to the betacoronavirus genus and is more closely related to HKU1 and OC43 compared to the alphacoronaviruses 229E and NL63(Jaimes et al., 2020, Okba et al., 2020). A recent study examining electronic medical records suggested that recent hCoV infections are not associated with decreased SARS-CoV-2 infections, but are associated with reducing the severity of Coronavirus Disease 2019 (COVID-19) (Sagar et al., 2020). It is unclear if this apparent cross-protection is mediated by antigen-specific cellular or humoral immunity or if it is due to short-term general cross-protection similar to what has been recently reported with rhinovirus and influenza virus infections (Wu et al., 2020). It is unknown if prior hCoV exposures elicit antibodies that prevent or alter the outcomes of SARS-CoV-2 infections. Further, it is unknown if different aged individuals have distinct hCoV immune histories that can affect SARS-CoV-2 susceptibility. To address this, we completed a serological survey using serum samples collected from different aged humans prior to the COVID-19 pandemic. We quantified levels of antibodies reactive to viral proteins from hCoVs and determined if these antibodies were associated with SARS-CoV-2 protection. Finally, we completed a series of studies using serum collected from COVID-19 patients to determine if antibodies reactive to hCoVs are boosted upon SARS-CoV-2 infections.

RESULTS

Identification of SARS-CoV-2-reactive Antibodies in Human Sera Collected Prior to the COVID-19 Pandemic

We completed ELISAs to quantify levels of pre-pandemic SARS-CoV-2-reactive IgG antibodies in 431 human serum samples collected in 2017. We tested serum samples collected from 263 children (age 1-17) at the Children's Hospital of Philadelphia originally collected for lead testing and 168 adults (age 18-90) who had been recruited into the Penn Medicine Biobank. We tested Penn Medicine Biobank samples from individuals who had no medical history of cancer or organ transplantation, pregnancy during the previous 9 months, or an infectious disease within the previous 28 days prior to blood draw. Using these samples, we previously found that different aged individuals possess H3N2 influenza virus antibodies that have different specificities (Gouma et al., 2020).

We found that 4.2% of serum samples collected in 2017 contained IgG antibodies that reacted to the SARS-CoV-2 full length spike (S) protein (**Figure 1A**), 0.93% of samples contained antibodies that reacted to the receptor binding domain (RBD) of the SARS-CoV-2 S protein (**Figure 1B**), and 16.2% of samples contained antibodies that reacted to the SARS-CoV-2 nucleocapsid (N) protein (**Figure 1C**). Several pre-pandemic serum samples contained antibodies that were at similar levels as those in serum from PCR-confirmed COVID-19 recovered donors (**Figure 1A-C**). We found no obvious differences in levels of SARS-CoV-2 cross-reactive antibodies among donors with different birth years (**Figure S1A-C**). We obtained similar results when ELISAs were completed with unpurified serum antibodies and purified IgG (**Figure S2**). Most serum samples with antibodies reactive to the SARS-CoV-2 full length S protein did not have antibodies that reacted to the SARS-CoV-2 S-RBD protein (**Figure 1D**),

which is consistent with a recent study showing that some individuals possessed pre-pandemic antibodies against the S2 domain of the SARS-CoV-2 S protein (Nguyen-Contant et al., 2020). There was a poor correlation between N and S antibody titers in pre-pandemic samples (**Figure S3**).

We completed neutralization assays using a SARS-CoV-2 vesicular stomatitis virus (VSV) pseudotype platform. In contrast to serum antibodies isolated from PCR-confirmed COVID-19 recovered donors, serum antibodies from individuals collected before the pandemic had very low or undetectable levels of SARS-CoV-2 neutralizing antibodies, regardless of whether or not the sample possessed cross-reactive antibodies against SARS-CoV-2 S and N proteins (**Figure 1E** and **Figure S4**). We obtained similar results when we tested pre-pandemic serum samples using a bonafide BSL3-level SARS-CoV-2 neutralization assay (**Figure S5**).

Humans with Pre-pandemic SARS-CoV-2-reactive Antibodies Had Elevated Levels of Antibodies Against Previously Circulating Betacoronaviruses

We completed ELISAs to quantify levels of pre-pandemic hCoV-reactive IgG antibodies in all 431 human serum samples collected in 2017. Most serum samples possessed antibodies that reacted to the S protein of 229E and NL63 (both alphacoronaviruses), as well as OC43 (a betacoronavirus) (**Figure S1D-F**). There were no major differences in levels of these antibodies among individuals with different birth years, however serum from very young children possessed lower levels of antibodies reactive to the 229E and NL63 S proteins (**Figure S1D-F**). We completed full antibody titrations to directly compared levels of hCoV antibodies in a subset of pre-pandemic samples from individuals who either did (n=17) or did not (n=17) possess cross-reactive SARS-CoV-2 antibodies (**Figure 1F-H**). Pre-pandemic antibody levels against the 229E

and NL63 alphacoronavirus S proteins were similar among individuals with and without SARS-CoV-2 reactive antibodies (**Figure 1F-G**). In contrast, antibody levels against the betacoronavirus OC43 S protein were higher in individuals with SARS-CoV-2 reactive antibodies compared to individuals who did not possess pre-pandemic SARS-CoV-2 reactive antibodies (**Figure 1H**). These data suggest that pre-pandemic SARS-CoV-2 reactive antibodies were likely elicited by previously circulating betacoronavirus strains, such as OC43.

Pre-existing hCoV Cross-reactive Antibodies Were Not Associated With Protection From SARS-CoV-2 Infections

It is unknown if antibodies elicited by prior hCoV infections protect against SARS-CoV-2 infections and/or prevent severe COVID-19. To address this, we measured SARS-CoV-2 IgG antibodies in pre-pandemic serum samples from 251 individuals who subsequently went on to become PCR-confirmed infected with SARS-CoV-2 and in a control group of pre-pandemic samples from 251 matched individuals who did not become infected with SARS-CoV-2. Pre-pandemic samples were collected by the Penn Medicine BioBank from August 2013 to March 2020 and PCR-confirmed SARS-CoV-2 infections were identified by nasopharyngeal swab PCR testing results in electronic health records. We found that 2.2% of samples possessed pre-pandemic antibodies reactive to the SARS-CoV-2 full length S protein, 0.6% of samples possessed pre-pandemic antibodies reactive to the SARS-CoV-2 S-RBD, and 23.9% of samples possessed pre-pandemic antibodies reactive to the SARS-CoV-2 N protein. Importantly, we found no differences in SARS-CoV-2-reactive antibodies in serum samples from individuals who did or did not become subsequently infected with SARS-CoV-2 (**Figure 2A**; S protein: $p=0.62$, S-RBD: $p=0.49$, N protein: $p=0.34$ and **Table S1** and **Table S2**). We also measured

antibodies reactive to the OC43 S protein and found no differences among samples from individuals who did or did not become infected with SARS-CoV-2 (**Figure 2A**; $p=0.90$ and **Table S1** and **Table S2**). Among those with PCR-confirmed SARS-CoV-2 infections, we found no relationship between SARS-CoV-2 and OC43 antibody titers and hospitalization or disease severity among hospitalized patients (**Table S1** and **Table S2**). We found no relationship between SARS-CoV-2 and OC43 antibody titers and the need for respiratory support and admittance into the ICU following SARS-CoV-2 infection (**Table S1** and **Table S2**).

Previous studies indicated that immunity to hCoV can be short-lived (Huang et al., 2020) and a recent study documented that antibody titers against hCoV can fluctuate over time (Edridge et al., 2020), presumably due to repetitive hCoV exposures. In our study, pre-pandemic serum samples were collected from 2013-2020 and therefore it is possible that antibody levels in some of the samples collected several years prior to 2020 do not accurately reflect antibody levels present during the COVID-19 pandemic. To address this, we compared SARS-CoV-2 and OC43 IgG antibody titers in the serum of individuals in our cohort who had samples collected within one year of the pandemic (between April 2019 and March 2020). Using this smaller cohort ($n=39$ SARS-CoV-2 cases and $n=57$ controls), we still found no differences in levels of antibodies reactive to the SARS-CoV-2 S protein, S-RBD protein, N protein, or OC43 S protein (**Figure 2B**). Taken together, our data suggest that a subset of humans possessed non-neutralizing cross-reactive antibodies against SARS-CoV-2 S and N proteins prior to the COVID-19 pandemic, but these antibodies were not associated with protection from SARS-CoV-2 infections or reducing hospitalizations upon SARS-CoV-2 infections.

SARS-CoV-2 Boosts Antibodies Reactive to Other Human Betacoronaviruses

Recent studies indicate that COVID-19 recovered donors possess higher levels of antibodies against seasonal betacoronaviruses (Nguyen-Contant et al., 2020). To determine if antibodies against the S protein of hCoVs are boosted upon SARS-CoV-2 infection, we measured 229E, NL63, OC43, and SARS-CoV-2 S IgG antibody levels in sera collected longitudinally from 27 hospitalized COVID-19 patients. Samples from a subset of the hospitalized patients (10 of 27) were tested using an extended respiratory pathogen viral panel to confirm that they were not simultaneously co-infected with SARS-CoV-2 and a different coronavirus. Serum IgG antibodies reactive to the S protein of the 229E and NL63 alphacoronaviruses did not change over 7 days of hospitalization (**Figure 3A-B**). Conversely, serum antibodies reactive to the S protein of OC43 and SARS-CoV-2 betacoronaviruses significantly increased over the course of hospitalization (**Figure 3A-B**). We found that boosted antibodies in hospitalized patients primarily targeted the S2 domain, and not the S1 domain, of the OC43 S protein (**Figure S6A-B**). Overall OC43 IgG antibody titers (**Figure 3C**) and the magnitude of OC43 S antibody boosts (**Figure 3D**) were not associated with outcome of disease. These data indicate that cross-reactive antibodies elicited by previous hCoV infections are not associated with protection from SARS-CoV-2 infections, but are boosted following infection with SARS-CoV-2.

DISCUSSION

Our study demonstrates that ~20% of individuals possessed SARS-CoV-2 cross-reactive serum antibodies prior to the COVID-19 pandemic. Using samples collected in 2017, we found that pre-pandemic cross-reactive antibodies directed against the SARS-CoV-2 N protein were more prevalent compared to those directed against the SARS-CoV-2 S protein (16.2%

seropositive versus 4.2% seropositive). We found that most individuals possessed pre-pandemic serum antibodies reactive to the S proteins of 229E, NL63, and OC43 (**Figure S1**); however, pre-pandemic samples with detectable levels of SARS-CoV-2 antibodies had higher levels of antibodies against the OC43 S protein (**Figure 1H**). Although our data suggest that prior infections with seasonal human betacoronaviruses (such as OC43) likely elicit antibodies that cross-react with SARS-CoV-2 proteins, it is unclear why only a subset of OC43 seropositive individuals possessed antibodies reactive to SARS-CoV-2 prior to the pandemic. Further studies will be needed to determine the temporal relationship between seasonal human betacoronavirus infections and the induction of SARS-CoV-2 cross-reactive antibodies. Further studies investigating the relationship of pre-pandemic antibodies against other betacoronaviruses, such as HKU1, with pre-pandemic SARS-CoV-2 cross-reactive antibodies are also needed.

Our study is consistent with a recent manuscript demonstrating a lack of SARS-CoV-2 neutralizing activity in pre-pandemic sera (Poston et al., 2020). In contrast, a different study reported that pre-pandemic serum from young children possess SARS-CoV-2 neutralizing antibodies (Ng et al., 2020). It is unclear if these differences are due to the specific assays used in each study or other factors such as geographic differences in sampling. For example, the Ng et al. study (Ng et al., 2020) used a pseudotyped neutralization assay with cells that lack ACE2, which is the cellular receptor for SARS-CoV-2. Our study is unique in that we were able to directly assess whether pre-pandemic antibodies were associated with protection from SARS-CoV-2 infections and hospitalizations. While we found no differences in pre-pandemic antibody levels against SARS-CoV-2 and OC43 among those infected and not infected with SARS-CoV-2 (**Figure 2**) and among SARS-CoV-2 infected individuals with different disease severities (**Tables S1-S2**), larger cohorts including individuals with a large range of different clinically-

defined disease severities will be required to determine if pre-pandemic levels of antibodies are associated with reducing some aspects of severe COVID-19. Additional studies need to be completed to determine if neutralizing antibodies elicited by SARS-CoV-2 infections protect against subsequent reinfections with SARS-CoV-2.

Further studies also need to be completed to determine how immune history affects de novo immune responses following SARS-CoV-2 infection. We find that individuals infected with SARS-CoV-2 produce antibodies reactive to both the SARS-CoV-2 S protein and OC43 S protein (**Figure 3**). In the case of influenza viruses, sequential infections with antigenically distinct strains can elicit antibodies against conserved epitopes between the strains and it is unclear if these cross-reactive antibodies inhibit de novo immune responses or affect disease severity (Cobey and Hensley, 2017). Our studies suggest that SARS-CoV-2 infection boosts antibodies reactive to the S2 domain of the OC43 S protein. Further studies are needed to precisely map the footprints of these antibodies and additional studies need to be completed to determine if these antibodies help resolve infections or if they enhance disease in COVID-19 patients.

Given that our data suggest that pre-pandemic non-neutralizing antibodies elicited by hCoVs do not provide SARS-CoV-2 protection, special attention should be directed towards evaluating if T cell responses primed against hCoV infections provide partial protection against SARS-CoV-2 infections. Recent studies have clearly shown that some individuals possessed SARS-CoV-2-specific CD4⁺ and CD8⁺ T cells prior to the COVID-19 pandemic (Braun et al., 2020, Grifoni et al., 2020, Le Bert et al., 2020, Mateus et al., 2020, Sette and Crotty, 2020, Schulien et al., 2020), and it is possible that pre-existing cellular immunity might play an

important protective role in the context of pandemic viruses that only share non-neutralizing antibody epitopes with previously circulating viral strains.

LIMITATIONS OF THE STUDY

The data presented here show that pre-pandemic serum antibodies that cross-react with SARS-CoV-2 do not correlate with protection against SARS-CoV-2 infections and severity of COVID-19. We generated data using pre-pandemic samples that were collected from individuals who became PCR+ confirmed infected with SARS-CoV-2. We compared antibody levels in these samples to antibody levels in pre-pandemic samples from individuals who did not get infected with SARS-CoV-2. For these studies, we included samples that were collected from August 2013 to March 2020 (**Figure 2A**). Since immunity to hCoVs can be short-lived (Huang et al., 2020) and fluctuate over time (Edridge et al., 2020), we also directly compared antibody titers in samples that were collected within one year of the pandemic (**Figure 2B**). Using both datasets, we found no correlation between pre-pandemic antibody levels and SARS-CoV-2 infections and COVID-19 severity. Nonetheless, future studies need to continue exploring the temporal relationship between seasonal coronavirus infections and the induction of SARS-CoV-2 cross-reactive antibodies to determine if transient antibody-mediated protection is possible. Future studies should also evaluate the protective potential of pre-pandemic cross-reactive mucosal antibodies. Finally, studies need to address if pre-existing cellular immunity limits COVID-19 severity. Our study only examined serum antibodies and it is possible that rapid engagement of memory B and T cells and long-lived plasma cells provide protection following SARS-CoV-2 exposures of humans with unique immune histories.

ACKNOWLEDGEMENTS

This work was supported by institutional funds from the University of Pennsylvania, NIH U19AI082630 (EJW and SEH), NIH HL137006 (NJM), NIH HL137915 (NJM), NIH R21AI129531 (PB), NIH R21AI142638 (PB), and Peer Reviewed Medical Research Program award PR182551 (PB). EMA and TBM were supported by the NIH Training in Virology T32 Program (T32AI007324). PH and CPA was supported by the NIH Emerging Infectious Diseases T32 Program (T32AI055400). We thank J. Lurie, J. Embiid, J. Harris, and D. Blitzler for philanthropic support. We thank all members of the Wherry Lab and the Penn COVID-19 Sample Processing Unit (Zahidul Alam, Mary M. Addison, Katelyn T. Byrne, Aditi Chandra, Hélène C. Descamps, Yaroslav Kaminskiy, Jacob T. Hamilton, Julia Han Noll, Dalia K. Omran, Eric Perkey, Elizabeth M. Prager, Dana Pueschl, Jennifer B. Shah, Jake S. Shilan, Ashley N. Vanderbeck) for sample procurement, processing, and logistics. We thank the staff of the PMBB. We thank F. Krammer (Mt. Sinai) for sending us the SARS-CoV-2 spike RBD expression plasmids. We thank David Anderson for assistance with the graphical abstract.

AUTHOR CONTRIBUTIONS

Serological Assays, E.M.A., E.C.G., C.P.A., M.J.B., M.E.W., S.G., C.M.M., S.R.C., P.H., T.B.M., H.R. and S.C.; Data Analyses, E.M.A., E.C.G., and A.V.; Obtaining and Processing Samples, O.O., D.M., A.E.B., D.A.O., A.R.G., J.E.W., C.A., K.D., O.K., J.D., A.P., J.K., N.H., S.A.A., A.C.H., L.A.V., L.K-C, M.B.P., and N.J.M.; Manuscript Writing, E.M.A., E.C.G., A.V., and D.J.R., S.E.H.; Supervision, S.G., J.W., M.R.B., E.J.W., N.J.M., S.C., P.B., D.J.R., and S.E.H.; Funding Acquisition, P.B., E.J.W., N.J.M., and S.E.H.

DECLARATION OF INTERESTS

A.C.H is a consultant for Immunai. E.J.W. has consulting agreements with and/or is on the scientific advisory board for Merck, Elstar, Janssen, Related Sciences, Synthekine and Surface Oncology. E.J.W. is a founder of Surface Oncology and Arsenal Biosciences. E.J.W. is an inventor on a patent (U.S. patent number 10,370,446) submitted by Emory University that covers the use of PD-1 blockade to treat infections and cancer. D.J.R. is on scientific advisory boards for Alnylam, Metrea, Novartis, Pfizer and Verve, is a consultant for and receives research support from Regeneron for work unrelated to this report, and is a founder of Vascular Strategies and Staten Biotechnologies. S.E.H. has received consultancy fee from Sanofi Pasteur, Lumen, Novavax, and Merck for work unrelated to this report.

FIGURE LEGENDS

Figure 1. Identification of pre-existing cross-reactive SARS-CoV-2 antibodies in human serum prior to the pandemic. ELISAs were completed to quantify levels of serum antibodies binding to the SARS-CoV-2 full-length spike (S) protein (**A**), the receptor binding domain (S-RBD) of S (**B**), and the nucleocapsid (N) protein (**C**); dashed line denotes lower limit of detection (LOD=50), dotted line represents a threshold set 2-fold above LOD (>100). We tested samples collected from 431 individuals in the summer of 2017, prior to the global pandemic. We also tested samples collected from 15 individuals following confirmed SARS-CoV-2 infections and recovered adults. (**D**) The relationship between antibody titers in donors with detectable IgG against the S-RBD and/or full length S is shown. (**E**) SARS-CoV-2 pseudotype neutralization assays were completed using pre-pandemic serum samples with (n=14) and without (n=29) cross reactive SARS-CoV-2 antibodies, as well as serum samples from individuals following

confirmed SARS-CoV-2 infections (n=15); one-way ANOVA Tukey's multiple comparisons of log2 transformed antibody titers ****p<0.0001; dotted line denotes lower LOD (=10). (F-H) ELISAs were completed to quantify levels of serum antibodies binding to the full length S proteins from 229E, NL63, and OC43 using pre-pandemic serum samples with (n=17) and without (n=17). Unpaired t-tests of log2 transformed antibody titers **p=0.002, *p=0.02. Horizontal lines indicate geometric mean and error bars represent standard deviation. See also Figure S1, S2, S3, S4, and S5 .

Figure 2. Pre-pandemic SARS-CoV-2 and OC43-reactive antibodies are not associated with protection from SARS-CoV-2 infection. We quantified antibody levels in pre-pandemic serum samples collected from individuals who later became SARS-CoV-2 infected (cases; n=251) and those who did not become SARS-CoV-2 infected (controls; n=251). ELISAs were completed to quantify levels of antibodies reactive to SARS-CoV-2 proteins (S, S-RBD, and N) and the OC43 S protein. Shown are data using samples collected from the entire cohort between August 2013 and March 2020 (A) and samples from a smaller subset of individuals collected between April 2019-March 2020 (B). Antibody titers between cases and controls were not significantly different as determined by unpaired t-tests of log2 transformed antibody titers. Dashed line denotes lower limit of detection (LOD=50), dotted line represents a threshold set 2-fold above LOD (>100). See also Table S1-S2.

Figure 3. SARS-CoV-2 infections boost antibodies that react to OC43 S protein. We quantified antibody levels in serum collected from 27 individuals 0 and 7 days after hospitalization for COVID-19. ELISAs were completed to quantify levels of antibodies reactive

to the S proteins of 229E, NL63, OC43 and SARS-CoV-2. (A) IgG titers and (B) titer fold change are shown. (C) Levels of OC43 S-reactive antibodies and (D) fold change in OC43 S-reactive antibodies were not associated with disease outcome. Paired t-test of log2 transformed antibody titers, **** $p < 0.0001$. One-way ANOVA Tukey's multiple comparisons fold-change in antibody titers, * $p < 0.04$. Horizontal lines indicate the median and error bars show interquartile ranges. See also Figure S6.

SUPPLEMENTAL FIGURE LEGENDS

Figure S1. There are no obvious age-related differences in pre-pandemic SARS-CoV-2 and hCoV reactive antibodies, related to Figure 1. ELISAs were completed to measure levels of serum antibodies binding to the SARS-CoV-2 full-length spike (S) protein (A), SARS-CoV-2 receptor binding domain (S-RBD) of S (B), SARS-CoV-2 nucleocapsid (N) protein (C), 229E S protein (D), NL63 S protein (E), and OC43 S protein (F). Serum samples collected from 431 individuals in the summer of 2017 were tested. Reciprocal titer from serially-diluted serum samples (A-C) and optical densities at 450nm wavelength (OD_{450}) of 1:500 dilution of serum (D-F) are shown. Dashed line denotes lower limit of detection ($LOD=50$), dotted line represents a threshold set 2-fold above $LOD (>100)$.

Figure S2. Comparison of ELISA data using unpurified and purified serum IgG antibodies, related to Figure 1. IgG was purified from sera samples from individuals without (A; $n=5$) and with (B; $n=11$) pre-pandemic cross-reactive antibodies. IgG was also purified from serum samples from individuals who had recovered from a confirmed SARS-CoV-2 infection (C; $n=5$). ELISAs were completed to quantify levels of serum antibodies binding to SARS-CoV-

2 full length S, S-RBD, and N protein with and without IgG magnetic bead purification. The dotted line represents a threshold set 2-fold above the limit of detection (>100).

Figure S3. Correlation between N, S, and S-RBD antibody titers in pre-pandemic samples, related to Figure 1.

Shown are the relationships between serum IgG antibody titers against the SARS-CoV-2 N protein and S-RBD (A) or full length S (B) from 431 individuals whose samples were collected prior to the pandemic in the summer of 2017. Dotted line represents a threshold set 2-fold above the limit of detection (>100).

Figure S4. SARS-CoV-2 pseudotype neutralization curves, related to Figure 1. Raw neutralization curves for data from **Figure 1E** are shown, including samples from individuals who did not have pre-pandemic cross reactive SARS-CoV-2 antibodies (A), individuals who possessed pre-pandemic cross reactive SARS-CoV-2 antibodies (B), and individuals following confirmed SARS-CoV-2 infection (C). Mean and error bars are shown for each replicate; dotted line denotes the cut-off for foci reduction neutralization of 50% (FRNT50).

Figure S5. Pre-pandemic cross-reactive antibodies do not neutralize SARS-CoV-2 in bonafide BSL3-level neutralization assays, related to Figure 1. Neutralization assays with live SARS-CoV-2 were completed using 9 pre-pandemic samples with cross-reactive SARS-CoV-2 antibodies, 7 pre-pandemic samples without cross-reactive SARS-CoV-2 antibodies, and 5 samples from individuals who recovered from a PCR-confirmed SARS-CoV-2 infection. The

pre-pandemic samples for these experiments were collected in 2019 and are different from those shown in Figure 1 (which were collected in 2017).

Figure S6. Antibodies directed to the S2 region of OC43 spike are boosted during SARS-CoV-2 infection, related to Figure 3. We quantified antibody levels in serum collected from 27 individuals 0 and 7 days after hospitalization for COVID-19. ELISAs were completed to measure levels of serum antibodies binding to the OC43 full-length spike (FL) protein and the individual S1 and S2 subunits of the OC43 spike. (A) IgG titers and (B) titer fold change are shown. Paired t-test of log2 transformed antibody titers, **** $p < 0.0001$. One-way ANOVA Tukey's multiple comparisons fold-change in antibody titers, ** $p = 0.0016$. Horizontal lines indicate the median and error bars show interquartile range.

STAR METHODS

KEY RESOURCES TABLE

REAGENT or RESOURCE	SOURCE	IDENTIFIER
Antibodies		
Goat anti-human IgG-HRP	Jackson ImmunoResearch	109-036-098
mAb CR3022	Expressed for this paper	
mAb 1E9F9	Absolute Antibody	Ab01402-2.0
anti-dsRNA J2	Absolute Antibody	Ab01299-2.0
Goat anti-mouse IgG alexa 488	ThermoFisher Scientific	A-11029
Hoescht 33342	Sigma Aldrich	B2261
Bacterial and Virus Strains		
SARS-CoV-2 VSV pseudotypes	Generated for this paper	N/A
SARS-CoV-2 (WA-1)	BEI	NR-52281
Biological Samples		
Pre-pandemic adult serum samples	Penn Medicine Biobank (PMBB)	N/A
Pre-pandemic children serum samples	Children's Hospital of Philadelphia (CHOP)	N/A
COVID-19 patient serum samples	Hospital of the University of Pennsylvania (HUP)	N/A
Chemicals, Peptides, and Recombinant Proteins		
SARS-CoV-2 spike protein	Expressed for this paper	N/A
SARS-CoV-2 RBD protein	Expressed for this paper	N/A
SARS-CoV-2 nucleocapsid protein	Sino Biological	Cat. 40588-V08B
OC43 spike protein	Sino Biological	Cat. 40607-V08B
NL63 spike protein	Sino Biological	Cat. 40604-V08B
229E spike protein	Sino Biological	Cat. 40605-V08B
OC43 S1 subunit protein	Expressed for this paper	N/A
OC43 S2 subunit protein	Expressed for this paper	N/A
Experimental Models: Cell Lines		
293T	ATCC	Cat. CRL-3216, RRID:CVCL_0063
293F	Laboratory of Scott Hensley, University of Pennsylvania, PA	Thermo Fisher cat. R79007
VeroE6/TMPRSS	Laboratory of Stefan Pohlman, German Primate Center, Leibniz Institute for Primate Research	Hoffman et al., 2020
Vero CCL81	ATCC	Cat. CCL-81, RRID:CVCL_0059
Recombinant DNA		
Plasmid: pCAGGS SARS-CoV-2 spike	Laboratory of Florian Krammer, Mt. Sinai, NY	Amanat et al., 2020
Plasmid: pCAGGS SARS-CoV-2 RBD	Laboratory of Florian Krammer, Mt. Sinai, NY	Amanat et al., 2020

Plasmid: pCG1 SARS- 2 S	Laboratory of Stefan Pohlman, German Primate Center, Leibniz Institute for Primate Research	Hoffman et al., 2020
Plasmid: OC43 rS1	Laboratory of Scott Hensley, University of Pennsylvania, PA	This paper
Plasmid: OC43 rS2	Laboratory of Scott Hensley, University of Pennsylvania, PA	This paper
Software and Algorithms		
Prism8	GraphPad Software	www.graphpad.com/scientific-software/prism/
Flouro-X	ImmunoSpot	www.immunospot.com/index-ctl

RESOURCES AVAILABILITY

Lead Contact

Further information and requests for resources and reagents should be directed to and will be fulfilled by the Lead Contact, Scott E. Hensley (hensley@pennmedicine.upenn.edu).

Materials Availability

All unique reagents generated in this study will be available from the Lead Contact upon reasonable request.

Data and Code Availability

All raw data generated in this study have been deposited on Mendeley Data:
<http://dx.doi.org/10.17632/ygv2j9psc5.1>

EXPERIMENTAL MODEL AND SUBJECT DETAILS

Pre-pandemic Human Serum Samples

Serum samples shown in **Figure 1** were collected before the COVID-19 pandemic between May and August of 2017 from individuals at the Children's Hospital of Philadelphia (CHOP; n=263, children age 0-18 years old) and through the Penn Medicine BioBank (n=168, adults \geq 18 years old). Samples from CHOP were leftover de-identified blood samples collected for routine lead testing.

Serum samples shown in **Figure 2** were collected via the Penn Medicine BioBank prior to the pandemic (n=502, between August 2013 and March 2020). These samples were from adults who

subsequently had a reverse transcription quantitative polymerase chain reaction (RT-qPCR) confirmed SARS-CoV-2 infection using nasopharyngeal swabs (cases, n=251), and those who had SARS-CoV-2 PCR negative results (controls, n=251). The RT-qPCR clinical testing results were acquired from Penn Medicine electronic health records and test results between March 2020 and August 2020 were included in the analysis. The Penn Medicine BioBank is an established repository that routinely collects blood products from donors visiting the University of Pennsylvania Healthcare system upon written informed consent. All studies were approved by the University of Pennsylvania Institutional Review Board.

Human Samples Collected After SARS-CoV-2 Infection

Serum samples were obtained from recovered convalescent donors who had a history of PCR-confirmed SARS-CoV-2 infection (n=15). These samples were used in experiments shown in Figure 1. Additionally, plasma samples were collected from patients admitted to the Hospital at the University of Pennsylvania (HUP) with PCR-confirmed SARS-CoV-2 infections (n=27), as previously described (Mathew et al., 2020). Hospital inpatients were categorized for pneumonia severity using a WHO ordinal scale that was based on the level of oxygen support needed at day 0 and day 7. All samples were collected after obtaining informed consent and studies were approved by the University of Pennsylvania Institutional Review Board.

Cell lines

293F cells were from Thermo fisher (Thermo Fisher cat. R79007). 293T and Vero CCL81 cells were from ATCC (ATCC cat. CRL-3216, RRID:CVCL_0063 and ATCC cat. CCL-81, RRID:CVCL_0059, respectively). VeroE6/TMPRSS2 cells were a gift from Stefan Pohlman (German Primate Center, Leibniz Institute for Primate Research) as described previously (Hoffmann et al., 2020). All cell lines were cultured using manufacturer's guidelines and used as described in Method Details below.

METHOD DETAILS

Quantification of serum antibody titers

Serum antibody titers against SARS-CoV-2 and other human coronavirus (hCoV) antigens were quantified by enzyme-linked immunosorbent assays (ELISA) as previously described (Flannery et al., 2020). Plasmids encoding the full-length SARS-CoV-2 spike (S) protein and the receptor binding domain of the S (S-RBD) were provided by Florian Krammer (Icahn School of Medicine at Mt. Sinai, New York City NY)(Amanat et al., 2020). SARS-CoV-2 S-RBD and the SARS-CoV-2 S proteins were purified from 293F transfected cells by Ni-NTA resin. SARS-CoV-2 nucleocapsid (N) protein, and full-length hCoV spike antigens (OC43, 229E, and NL63) were purchased (Sino Biological, Wayne PA; cat. 40588-V08B, 40607-V08B, 40604-V08B, and 40605-V08B, respectively) and reconstituted in Dulbecco's phosphate buffered saline (DPBS). OC43 subunit proteins were purified by Ni-NTA resin from 293F cells transfected with plasmids encoding the S1 or S2 subunits of the OC43 spike protein. ELISA plates (Thermo Fisher Scientific: cat. 14-245-153) were coated overnight at 4°C with either 2 µg/mL SARS-CoV-2 antigen, 1.5 µg/mL hCOV antigen, or DPBS to control for background. Sera was heat-inactivated in a 56°C water bath for 1 hour prior to serial dilutions starting at 1:50 in dilution buffer (DPBS supplemented with 1% milk and 0.1% Tween-20). ELISA plates were blocked with 200µL of blocking buffer (DPBS supplemented with 3% milk and 0.1% Tween-20), washed 3 times with PBS plus 2% Tween (PBS-T), and 50µL of diluted sera was added. After 2 hours of incubation, ELISA plates were washed 3 times with PBS-T and bound antibodies were detected using a 1:5000 dilution of goat anti-human IgG conjugated to horseradish peroxidase (Jackson ImmunoResearch Laboratories, West Grove, PA: cat. 109-036-098). ELISA plates were developed with the addition of 50 µL SureBlue 3, 3', 5, 5'-tetramethylbenzidine substrate (SeraCare: material number 5120-0077) and the reactions were stopped by the addition of 25µL of 250mM hydrochloric acid after 5 minutes. Optical densities at 450nm wavelength were obtained on a SpectraMax 190 microplate reader (Molecular Devices, San Jose, CA). Serum antibody titers were expressed as the reciprocal serum dilution at a set OD that was based off of a standard curve from the monoclonal antibody CR3022 (a gift from Ian Wilson, Scripps) starting at 0.5µg/mL (for S-RBD and S ELISAs) or serially diluted pooled serum (for SARS-CoV-2 N ELISAs and hCoV S ELISAs). Standard curves were included on every plate to control for plate-to-plate variation. Antibody titers for each sample were measured in at least two technical replicates performed on separate days.

Purification of IgG antibodies

For some experiments, we purified IgG from sera samples before completing ELISAs. IgG was purified from sera samples using PureProteome Protein G magnetic beads (Millipore, Darmstadt, Germany: cat. LSKMAGG02) as previously described (Arevalo et al., 2020). Sera samples were diluted in PBS and incubated with 100 μ L of washed magnetic beads for 1 hour at room temperature with constant mixing. Unbound fractions were removed using the magnetic stand and beads were washed with PBS. Bound IgG was eluted with the addition of 100 μ L of 0.2 M glycine, pH 2.5 followed by 5 minute incubation at room temperature. The eluant containing purified IgG was neutralized with 10 μ L of 1.0 M Tris, pH 8.8 prior to being run in ELISA.

Generation of SARS-CoV-2 pseudotypes

SARS-CoV-2 pseudotypes were generated with a previously described vesicular stomatitis virus (VSV) pseudotype platform (Anderson et al., 2020). Briefly, pseudotyped VSV virions with SARS-CoV-2 Spike were produced through transfection of 293T with 35 μ g of pCG1 SARS-CoV-2 S delta18 expression plasmid encoding a codon optimized SARS-CoV-2 S gene with an 18-residue truncation in the cytoplasmic tail (kindly provided by Stefan Pohlmann) (Hoffmann et al., 2020). 30 hours post transfection, the SARS-CoV-2 spike expressing cells were infected for 2-4 hours with VSV-G pseudotyped VSV Δ G-RFP at a multiplicity of infection (MOI) of ~1-3. Then, the cells were washed twice with media to remove unbound virus. 28-30 hours after infection, the media containing the VSV Δ G-RFP SARS-CoV-2 pseudotypes were harvested and clarified by centrifugation two times at 6000xg. SARS-CoV-2 pseudotypes were aliquoted and stored at -80°C until used for antibody neutralization analysis.

Quantification of SARS-CoV-2 pseudotype neutralizing antibody titers

Serum SARS-CoV-2 neutralizing antibodies were measured as previously described (Anderson et al., 2020). Vero E6 cells stably expressing TMPRSS2 were seeded in 100 μ L at 2.5×10^4 cells/well in a 96 well collagen coated plate. The next day, heat inactivated serum samples were serially diluted 2-fold and mixed with 50-200 focus forming units/well of VSV Δ G-RFP SARS-CoV-2 pseudotype virus and 600ng/ml of 1E9F9, a mouse anti-VSV Indiana G (Absolute Antibody, Oxford, UK: cat. Ab01402-2.0). The serum-virus mixture was incubated for 1 hour at 37°C before being plated on VeroE6 TMPRSS2 cells. 23-24 hours post infection, the cells were

washed, fixed with 4% paraformaldehyde, and visualized on an S6 FluoroSpot Analyzer (CTL, Shaker Heights OH) and individual infected foci were enumerated. The focus reduction neutralization titer 50% (FRNT₅₀) was measured as the greatest serum dilution at which focus count was reduced by at least 50% relative to control cells that were infected with pseudotype virus in the absence of human serum. FRNT₅₀ titers for each sample were measured in at least two technical replicates performed on separate days.

BSL-3 SARS-CoV-2 neutralization assays

Vero CCL81 (ATCC: cat. CCL-81) cells were plated in 96 well plates (100µL/well) at a density of 25,000 cells per well. The following day, in the BSL-3, 100 plaque forming units (pfu) of SARS-CoV-2 (WA-1, BEI cat. NR-52281) was diluted into 30 µl DMEM and added to each dilution of serum samples. The serum and virus were incubated together at room temperature for 1 hour and transferred to the supernatant of the Vero CCL81 cells. Each sample was prepared independently in duplicate. Cells were incubated under standard cell culture conditions at 37°C and 5% CO₂ for 48h. Cells were fixed in 4% formaldehyde/PBS for 15 min at room temperature and then washed three times with PBST. Cells were blocked (2% BSA/PBST) for 60 minutes and incubated in primary antibody (anti-dsRNA J2, Absolute Antibody cat: Ab01299-2.0) overnight at 4C. Cells were washed 3x PBS and incubated in secondary (anti-mouse IgG alexa 488 Thermofisher cat. A-11029, and hoescht 33342, Sigma Aldrich cat. B2261) for 2h at room temperature. Cells were washed 3x in PBST and imaged using ImageXpress Micro (Molecular Devices, San Jose, CA) using a 10X objective. Ten sites per well were captured and wells were scored for viral infection.

QUANTIFICATION AND STATISTICAL ANALYSIS

Statistical analyses were performed using Prism version 8 (GraphPad Software, San Diego CA). Reciprocal serum dilution antibody titers were log₂ transformed for statistical analysis. ELISA antibody titers below the limit of detection (LOD; reciprocal titer <50) were set to a reciprocal titer of 25. Log₂ transformed antibody titers were compared with unpaired t-tests and statistical significance was set to p-value <0.05. Linear regressions were also performed using log₂ transform titers and untransformed data from the other variables. We compared antibody titers in pre-pandemic serum samples from individuals who did and did not have a subsequent PCR-

confirmed SARS-CoV-2 infection. For these analyses we selected serum sample from individuals with RT-PCR negative results matching sex, age, and race for each SARS-CoV-2 PCR-confirmed case (RT-PCR positive) to define controls for our cohort. In instances we did not find matched controls, we randomly selected patients with RT-PCR negative test results. We also compared antibody titers in pre-pandemic serum samples among SARS-CoV-2 PCR-confirmed individuals in relationship to hospitalization or need for respiratory support due to COVID-19. Multivariate logistic regression was used to compare the antibody differences for these studies. All the models were adjusted by sex, age, race, and analyses were performed in R (R Core Team, 2016). We compared Log2 transformed antibody titers in COVID-19 hospitalized patients at day 0 and day 7. We also compared the fold change in titer by day 7. We compared the fold change in OC43 titers between patients who survived and patients who died by day 28 of hospitalization.

REFERENCES

- Amanat, F., Stadlbauer, D., Strohmeier, S., Nguyen, T. H. O., Chromikova, V., McMahon, M., Jiang, K., Arunkumar, G. A., Jurczyszak, D., Polanco, J., et al. 2020. A serological assay to detect SARS-CoV-2 seroconversion in humans. *Nat Med*.
- Anderson, E. M., Diorio, C., Goodwin, E. C., Mcnerney, K. O., Weirick, M. E., Gouma, S., Bolton, M. J., Arevalo, C. P., Chase, J., Hicks, P., et al. 2020. SARS-CoV-2 antibody responses in children with MIS-C and mild and severe COVID-19. *J Pediatric Infect Dis Soc*.
- Arevalo, C. P., Le Sage, V., Bolton, M. J., Eilola, T., Jones, J. E., Kormuth, K. A., Nturibi, E., Balmaseda, A., Gordon, A., Lakdawala, S. S., et al. 2020. Original antigenic sin priming of influenza virus hemagglutinin stalk antibodies. *Proc Natl Acad Sci U S A*, 117, 17221-17227.
- Braun, J., Loyal, L., Frentsch, M., Wendisch, D., Georg, P., Kurth, F., Hippenstiel, S., Dingeldey, M., Kruse, B., Fauchere, F., et al. 2020. SARS-CoV-2-reactive T cells in healthy donors and patients with COVID-19. *Nature*.
- Cobey, S. & Hensley, S. E. 2017. Immune history and influenza virus susceptibility. *Curr Opin Virol*, 22, 105-111.
- Dijkman, R., Jebbink, M. F., Gaunt, E., Rossen, J. W., Templeton, K. E., Kuijpers, T. W. & Van Der Hoek, L. 2012. The dominance of human coronavirus OC43 and NL63 infections in infants. *J Clin Virol*, 53, 135-9.
- Edridge, A. W. D., Kaczorowska, J., Hoste, A. C. R., Bakker, M., Klein, M., Loens, K., Jebbink, M. F., Matser, A., Kinsella, C. M., Rueda, P., et al. 2020. Seasonal coronavirus protective immunity is short-lasting. *Nat Med*.
- Flannery, D. D., Gouma, S., Dhudasia, M. B., Mukhopadhyay, S., Pfeifer, M. R., Woodford, E. C., Gerber, J. S., Arevalo, C. P., Bolton, M. J., Weirick, M. E., et al. 2020. SARS-CoV-2 seroprevalence among parturient women in Philadelphia. *Sci Immunol*, 5.
- Friedman, N., Alter, H., Hindiyeh, M., Mendelson, E., Shemer Avni, Y. & Mandelboim, M. 2018. Human Coronavirus Infections in Israel: Epidemiology, Clinical Symptoms and Summer Seasonality of HCoV-HKU1. *Viruses*, 10.
- Gaunt, E. R., Hardie, A., Claas, E. C., Simmonds, P. & Templeton, K. E. 2010. Epidemiology and clinical presentations of the four human coronaviruses 229E, HKU1, NL63, and OC43 detected over 3 years using a novel multiplex real-time PCR method. *J Clin Microbiol*, 48, 2940-7.
- Gouma, S., Kim, K., Weirick, M. E., Gumina, M. E., Branche, A., Topham, D. J., Martin, E. T., Monto, A. S., Cobey, S. & Hensley, S. E. 2020. Middle-aged individuals may be in a perpetual state of H3N2 influenza virus susceptibility. *Nat Commun*, 11, 4566.
- Grifoni, A., Weiskopf, D., Ramirez, S. I., Mateus, J., Dan, J. M., Moderbacher, C. R., Rawlings, S. A., Sutherland, A., Premkumar, L., Jadi, R. S., et al. 2020. Targets of T Cell Responses to SARS-CoV-2 Coronavirus in Humans with COVID-19 Disease and Unexposed Individuals. *Cell*, 181, 1489-1501 e15.
- Hoffmann, M., Kleine-Weber, H., Schroeder, S., Kruger, N., Herrler, T., Erichsen, S., Schiergens, T. S., Herrler, G., Wu, N. H., Nitsche, A., et al. 2020. SARS-CoV-2 Cell Entry Depends on ACE2 and TMPRSS2 and Is Blocked by a Clinically Proven Protease Inhibitor. *Cell*, 181, 271-280 e8.

- Huang, A. T., Garcia-Carreras, B., Hitchings, M. D. T., Yang, B., Katzelnick, L. C., Rattigan, S. M., Borgert, B. A., Moreno, C. A., Solomon, B. D., Trimmer-Smith, L., et al. 2020. A systematic review of antibody mediated immunity to coronaviruses: kinetics, correlates of protection, and association with severity. *Nat Commun*, 11, 4704.
- Jaimes, J. A., Andre, N. M., Chappie, J. S., Millet, J. K. & Whittaker, G. R. 2020. Phylogenetic Analysis and Structural Modeling of SARS-CoV-2 Spike Protein Reveals an Evolutionary Distinct and Proteolytically Sensitive Activation Loop. *J Mol Biol*, 432, 3309-3325.
- Killerby, M. E., Biggs, H. M., Haynes, A., Dahl, R. M., Mustaquim, D., Gerber, S. I. & Watson, J. T. 2018. Human coronavirus circulation in the United States 2014-2017. *J Clin Virol*, 101, 52-56.
- Le Bert, N., Tan, A. T., Kunasegaran, K., Tham, C. Y. L., Hafezi, M., Chia, A., Chng, M. H. Y., Lin, M., Tan, N., Linster, M., et al. 2020. SARS-CoV-2-specific T cell immunity in cases of COVID-19 and SARS, and uninfected controls. *Nature*, 584, 457-462.
- Mateus, J., Grifoni, A., Tarke, A., Sidney, J., Ramirez, S. I., Dan, J. M., Burger, Z. C., Rawlings, S. A., Smith, D. M., Phillips, E., et al. 2020. Selective and cross-reactive SARS-CoV-2 T cell epitopes in unexposed humans. *Science*, 370, 89-94.
- Mathew, D., Giles, J. R., Baxter, A. E., Oldridge, D. A., Greenplate, A. R., Wu, J. E., Alanio, C., Kuri-Cervantes, L., Pampena, M. B., D'andrea, K., et al. 2020. Deep immune profiling of COVID-19 patients reveals distinct immunotypes with therapeutic implications. *Science*, 369.
- Ng, K. W., Faulkner, N., Cornish, G. H., Rosa, A., Harvey, R., Hussain, S., Ulferts, R., Earl, C., Wrobel, A. G., Benton, D. J., et al. 2020. Preexisting and de novo humoral immunity to SARS-CoV-2 in humans. *Science*.
- Nguyen-Contant, P., Embong, A. K., Kanagaiah, P., Chaves, F. A., Yang, H., Branche, A. R., Topham, D. J. & Sangster, M. Y. 2020. S Protein-Reactive IgG and Memory B Cell Production after Human SARS-CoV-2 Infection Includes Broad Reactivity to the S2 Subunit. *mBio*, 11.
- Okba, N. M. A., Muller, M. A., Li, W., Wang, C., Geurtsvankessel, C. H., Corman, V. M., Lamers, M. M., Sikkema, R. S., De Bruin, E., Chandler, F. D., et al. 2020. Severe Acute Respiratory Syndrome Coronavirus 2-Specific Antibody Responses in Coronavirus Disease Patients. *Emerg Infect Dis*, 26, 1478-1488.
- Pfefferle, S., Oppong, S., Drexler, J. F., Gloza-Rausch, F., Ipsen, A., Seebens, A., Muller, M. A., Annan, A., Vallo, P., Adu-Sarkodie, Y., et al. 2009. Distant relatives of severe acute respiratory syndrome coronavirus and close relatives of human coronavirus 229E in bats, Ghana. *Emerg Infect Dis*, 15, 1377-84.
- Poston, D., Weisblum, Y., Wise, H., Templeton, K., Jenks, S., Hatzioannou, T. & Bieniasz, P. D. 2020. Absence of SARS-CoV-2 neutralizing activity in pre-pandemic sera from individuals with recent seasonal coronavirus infection. *medRxiv*.
- Pyrk, K., Dijkman, R., Deng, L., Jebbink, M. F., Ross, H. A., Berkhout, B. & Van Der Hoek, L. 2006. Mosaic structure of human coronavirus NL63, one thousand years of evolution. *J Mol Biol*, 364, 964-73.
- R Core Team, 2016. *R: A Language and Environment for Statistical Computing* [Online]. Vienna, Austria. Available: <https://www.R-project.org/> [Accessed].

- Sagar, M., Reifler, K., Rossi, M., Miller, N. S., Sinha, P., White, L. & Mizgerd, J. P. 2020. Recent endemic coronavirus infection is associated with less severe COVID-19. *J Clin Invest.*
- Schulien, I., Kemming, J., Oberhardt, V., Wild, K., Seidel, L. M., Killmer, S., Sagar, Daul, F., Salvat Lago, M., Decker, A., et al. 2020. Characterization of pre-existing and induced SARS-CoV-2-specific CD8⁺ T cells. *Nature Medicine.*
- Sette, A. & Crotty, S. 2020. Pre-existing immunity to SARS-CoV-2: the knowns and unknowns. *Nat Rev Immunol*, 20, 457-458.
- Vijgen, L., Keyaerts, E., Lemey, P., Maes, P., Van Reeth, K., Nauwynck, H., Pensaert, M. & Van Ranst, M. 2006. Evolutionary history of the closely related group 2 coronaviruses: porcine hemagglutinating encephalomyelitis virus, bovine coronavirus, and human coronavirus OC43. *J Virol*, 80, 7270-4.
- Woo, P. C., Lau, S. K., Chu, C. M., Chan, K. H., Tsoi, H. W., Huang, Y., Wong, B. H., Poon, R. W., Cai, J. J., Luk, W. K., et al. 2005. Characterization and complete genome sequence of a novel coronavirus, coronavirus HKU1, from patients with pneumonia. *J Virol*, 79, 884-95.
- Wu, A., Mihaylova, V. T., Landry, M. L. & Foxman, E. F. 2020. Interference between rhinovirus and influenza A virus: a clinical data analysis and experimental infection study. *Lancet Microbe*, 1, e254-e262.

Highlights

- Some humans possessed cross-reactive SARS-CoV-2 antibodies prior to the pandemic
- Pre-pandemic SARS-CoV-2 reactive antibodies are not associated with protection
- Antibodies to a related betacoronavirus are boosted upon SARS-CoV-2 infection

Analysis of human serum samples before and after the onset of the COVID-19 pandemic show that antibodies against common seasonal human coronaviruses are cross-reactive against SARS-CoV-2 but do not confer cross-protection against infection or hospitalization.

Figure 1

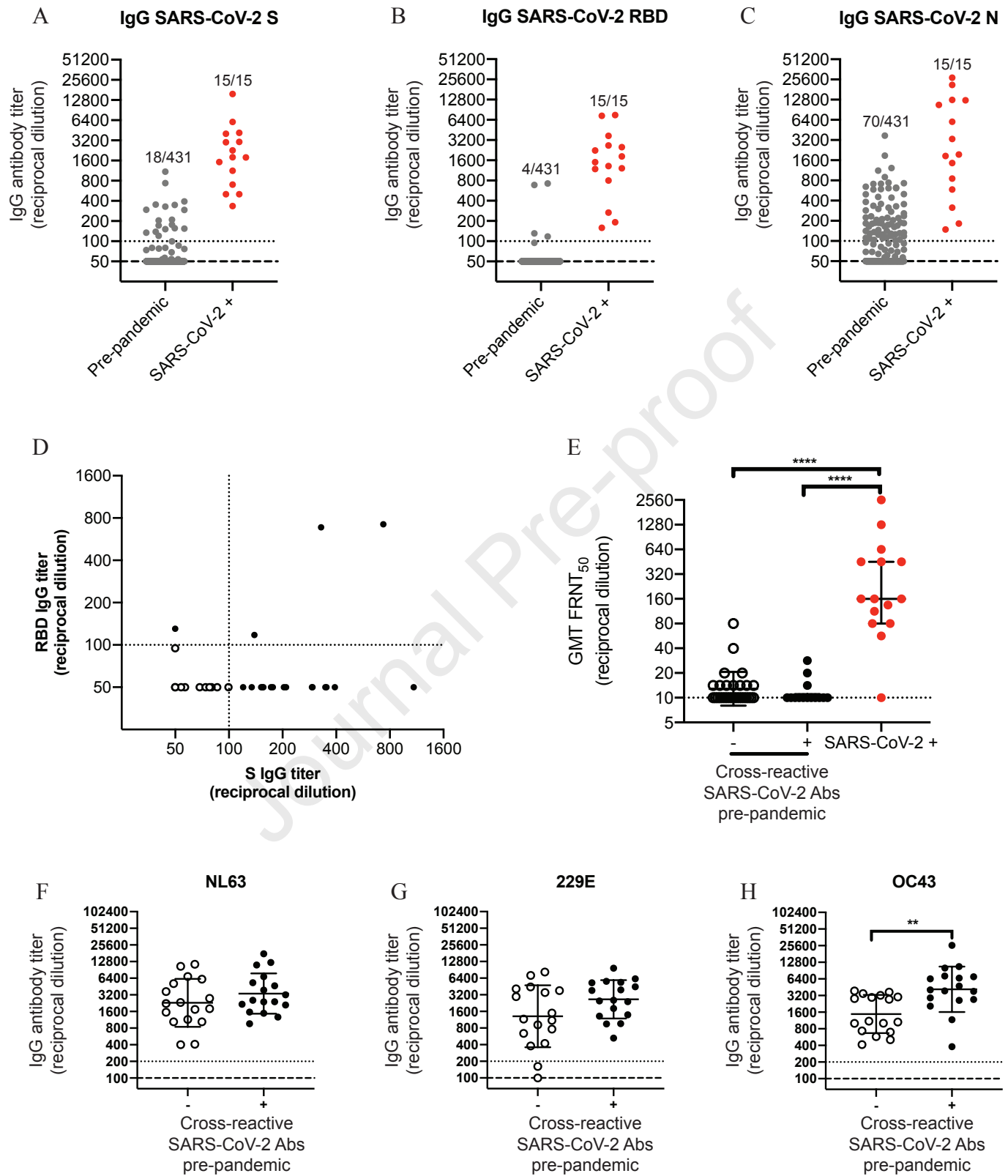


Figure 2

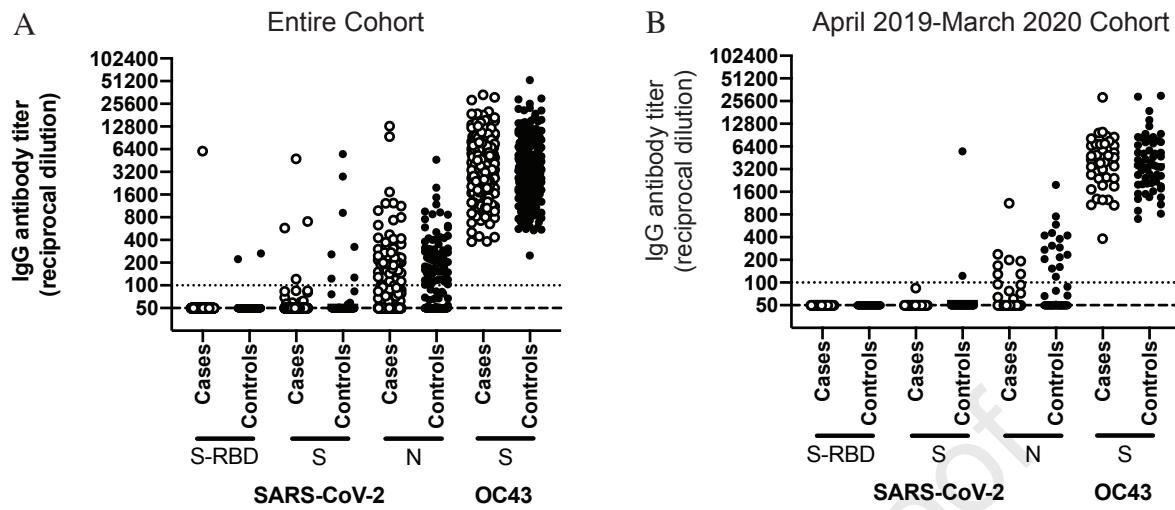


Figure 3

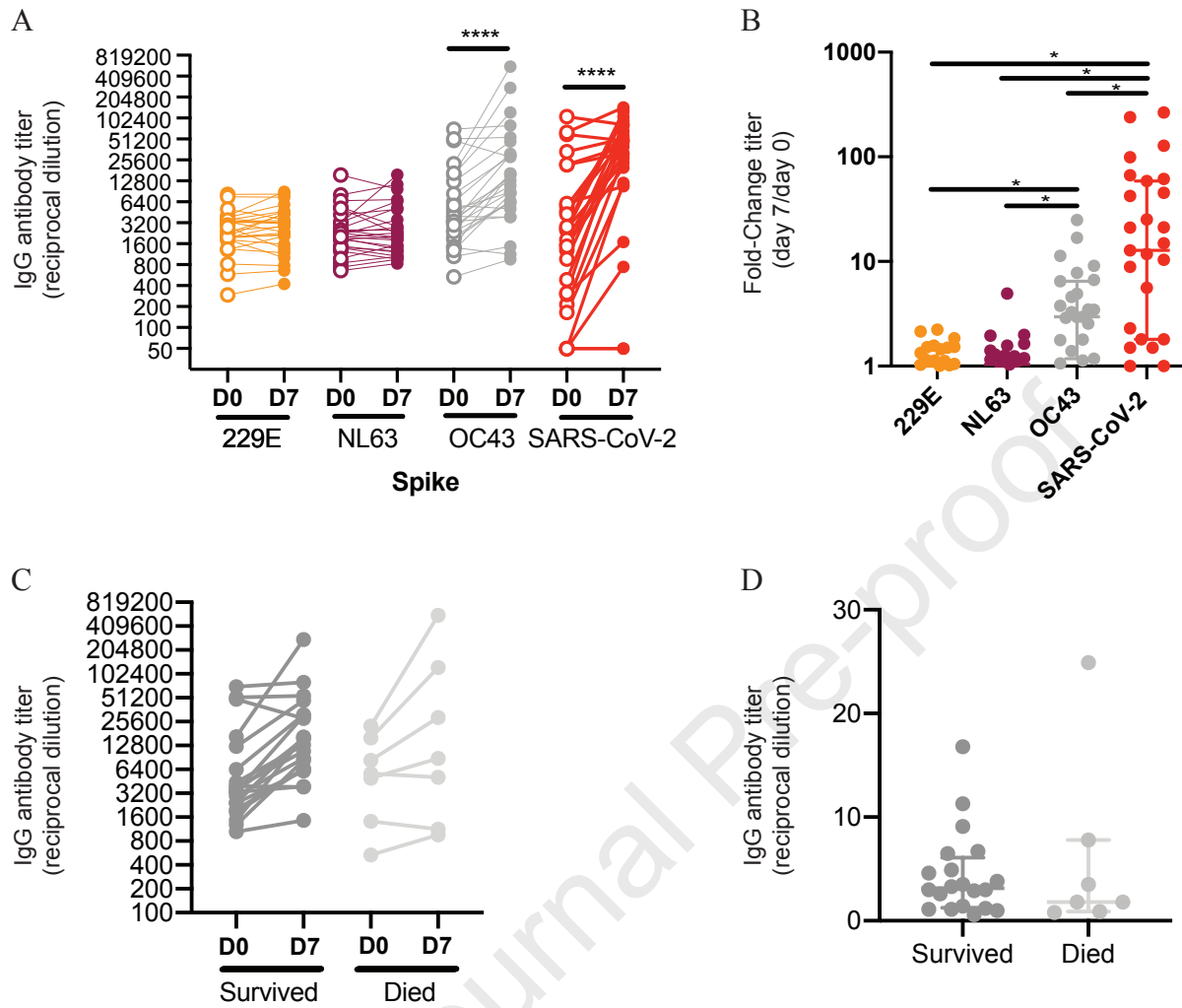


Figure S1

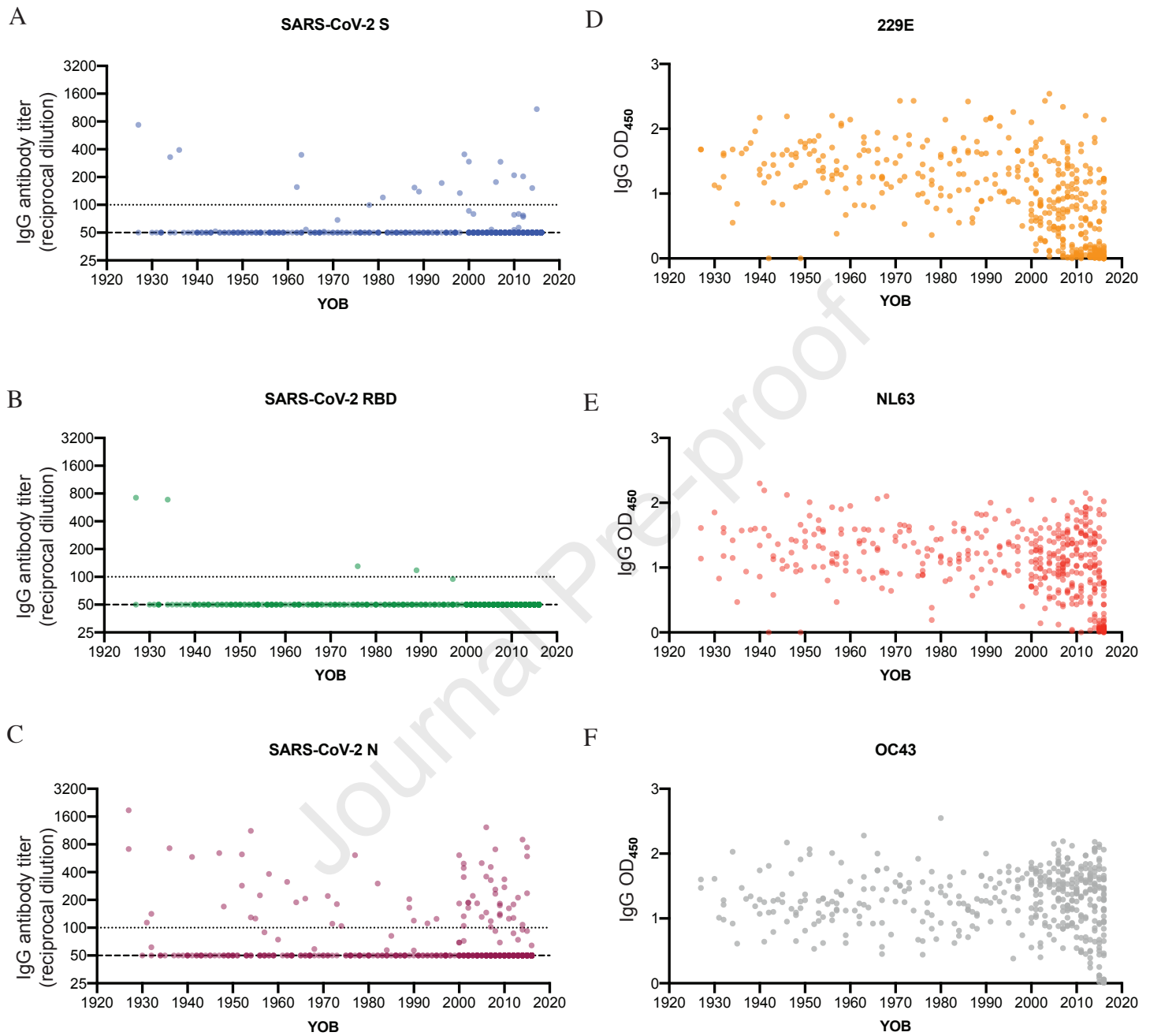


Figure S2

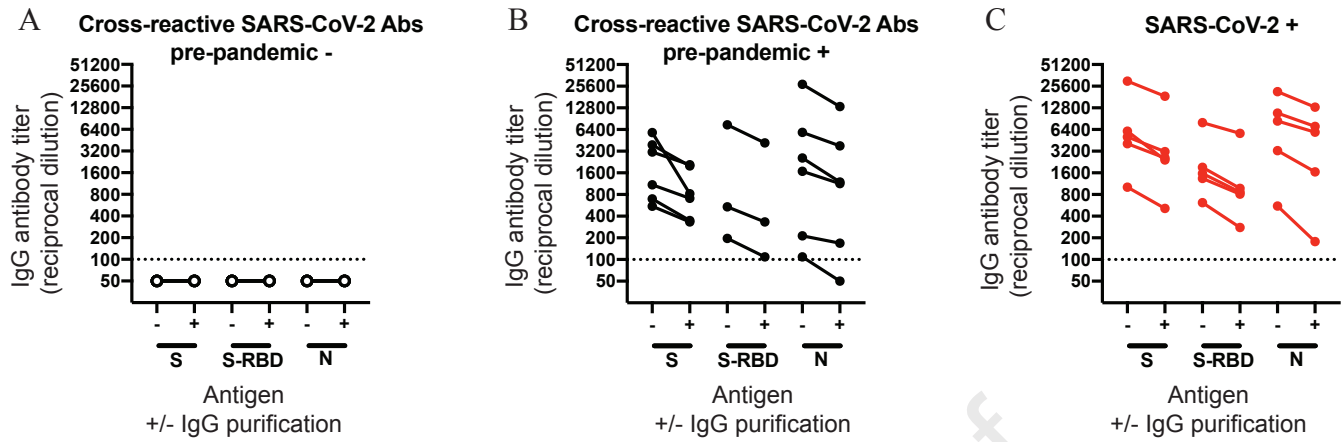


Figure S3

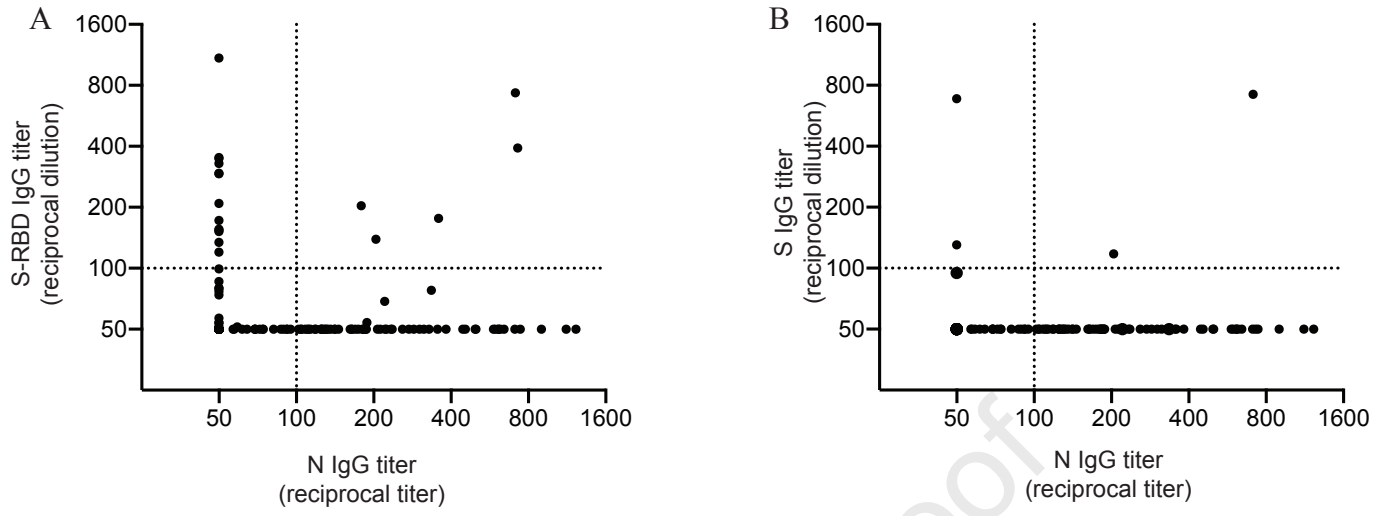




Figure S6

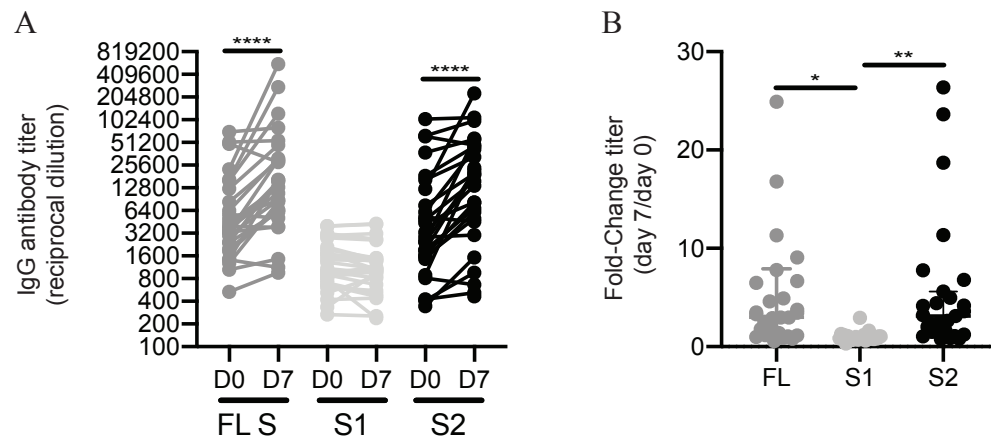


Table S1: Comparison between antibody titers and COVID-19 phenotypes, related to Figure 2.

Phenotype Name	Antibody Titers	Beta	SE	P	Cases	Controls
SARS-CoV-2 Susceptibility	N titer	9E-05	1E-04	0.47	251	251
SARS-CoV-2 Susceptibility	Spike-FL Titer	-1E-04	3E-04	0.65	251	251
SARS-CoV-2 Susceptibility	Spike-RBD Titer	5E-04	9E-04	0.53	251	251
SARS-CoV-2 Susceptibility	OC43 Spike Titer	1E-06	2E-05	0.93	251	251
COVID-19 Hospitalization	N Titer	1E-04	1E-04	0.40	80	171
COVID-19 Hospitalization	Spike-FL Titer	-5E-04	1E-03	0.61	80	171
COVID-19 Hospitalization	Spike-RBD Titer	-2E-03	1E-01	0.99	80	171
COVID-19 Hospitalization	OC43 Spike Titer	1E-05	3E-05	0.62	80	171
COVID-19 Severe Hospitalization	N Titer	-5E-04	1E-03	0.70	24	171
COVID-19 Severe Hospitalization	Spike-FL Titer	-1E-04	8E-04	0.88	24	171
COVID-19 Severe Hospitalization	Spike-RBD Titer	-2E-03	2E-01	0.99	24	171
COVID-19 Severe Hospitalization	OC43 Spike Titer	2E-05	5E-05	0.74	24	171

Table S2: Phenotype definitions related to Table S1, related to Figure 2.

Phenotype Name	Case Definition	Control Definition	Case	Controls
SARS-CoV-2 Susceptibility	RT-PCR confirmed <i>positive</i> test for SARS-CoV2 infection	RT-PCR confirmed <i>negative</i> test for SARS-CoV2 infection	251	251
COVID-19 Hospitalization	RT-PCR confirmed positive test for SARS-CoV2 infection and <i>hospitalized</i> due to COVID-19	RT-PCR confirmed positive test for SARS-CoV2 infection and <i>not hospitalized</i> due to COVID-19	80	171
COVID-19 Severe Hospitalization	RT-PCR confirmed positive test for SARS-CoV2 infection and <i>required respiratory support or had ICU stay</i> due to COVID-19	RT-PCR confirmed positive test for SARS-CoV2 infection and <i>not hospitalized</i> due to COVID-19	24	171